



## INCB TOOLS AND RESOURCES ON EQUIPMENT IN ILLICIT DRUG MANUFACTURE



**INTERACTIVE PDF**

Click on the plus sign to learn more



Technical paper on illicit drug manufacturing equipment and article 13 of the 1988 Convention



Guidelines to prevent and investigate the diversion of materials and equipment essential for illicit drug manufacture



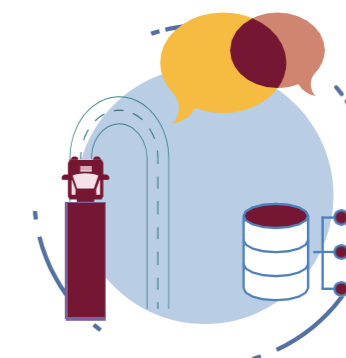
Awareness-raising and guidance document for policy makers on illicit drug manufacturing equipment and article 13



The International Monitoring List of Equipment used in the illicit manufacture of drugs (IMLE)



Repository of national approaches



Precursors Incident Communication System (PICS)





## Technical paper on illicit drug manufacturing equipment and article 13 of the 1988 Convention

### What is it?

Technical paper published on a recurring basis

### Who is it for?

Regulatory authorities, law enforcement and other national authorities concerned with equipment-related matters, international organizations and general public

### When and why use it?

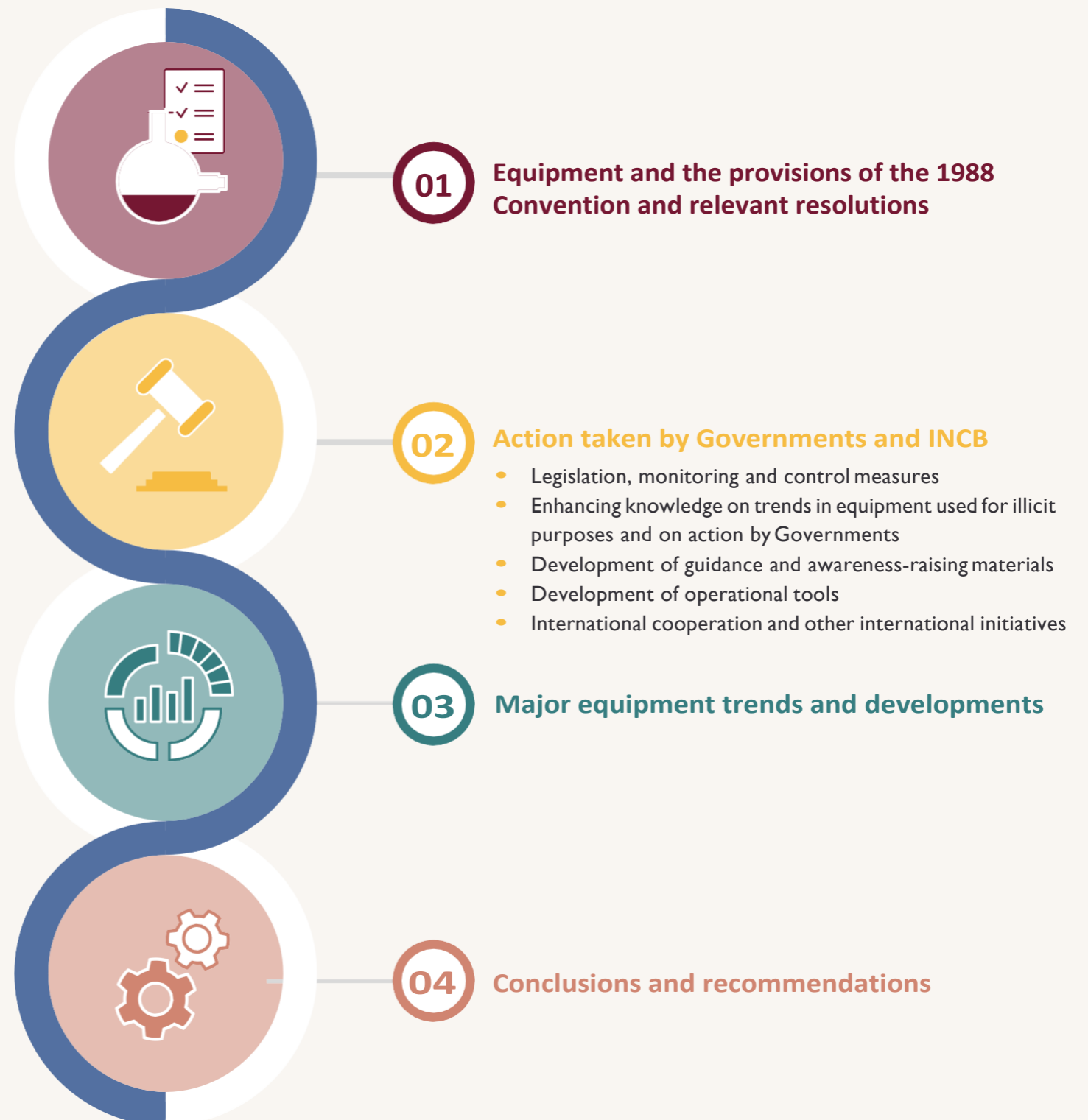
It provides a situation analysis related to equipment used in the illicit manufacture of drugs and the implementation of article 13. It contains information about the regulatory framework provided by the 1988 Convention and relevant resolutions, action taken by Governments and INCB and an analysis of major trends and developments. It also includes conclusions and recommendations to Governments aimed at increasing the operational use of article 13 of the 1988 Convention.

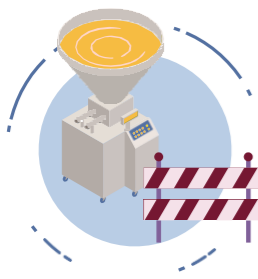
### How/where to access it?

Available on this [link](#).

All official UN language versions available on this [link](#).

## CONTENTS OF THE TECHNICAL PAPER: OVERVIEW





## Guidelines to prevent and investigate the diversion of materials and equipment essential for illicit drug manufacture

### What is it?

Practical guidance document

### Who is it for?

Regulatory authorities, law enforcement and other national authorities in need of addressing the diversion or misuse of equipment

### When and why use it?

The guidelines may assist Governments in increasing the operational use of article 13 of the 1988 Convention by taking appropriate measures to prevent and investigate the diversion of equipment for use in the illicit manufacture of drugs. The document contains measures and approaches, ranging from sensitizing the industry and voluntary initiatives to establishing more comprehensive regulatory systems.

### How and where to access it?

Available in all official UN languages on the [INCB secure portal](#) or on request for use by national authorities.

## AREAS COVERED IN THE GUIDELINES





## Awareness-raising and guidance document for policy makers on illicit drug manufacturing equipment and article 13

### What is it?

Awareness raising and guidance document

### Who is it for?

Regulatory authorities, law enforcement, other national authorities and policy makers concerned with equipment-related matters, international organizations and general public

### When and why use it?

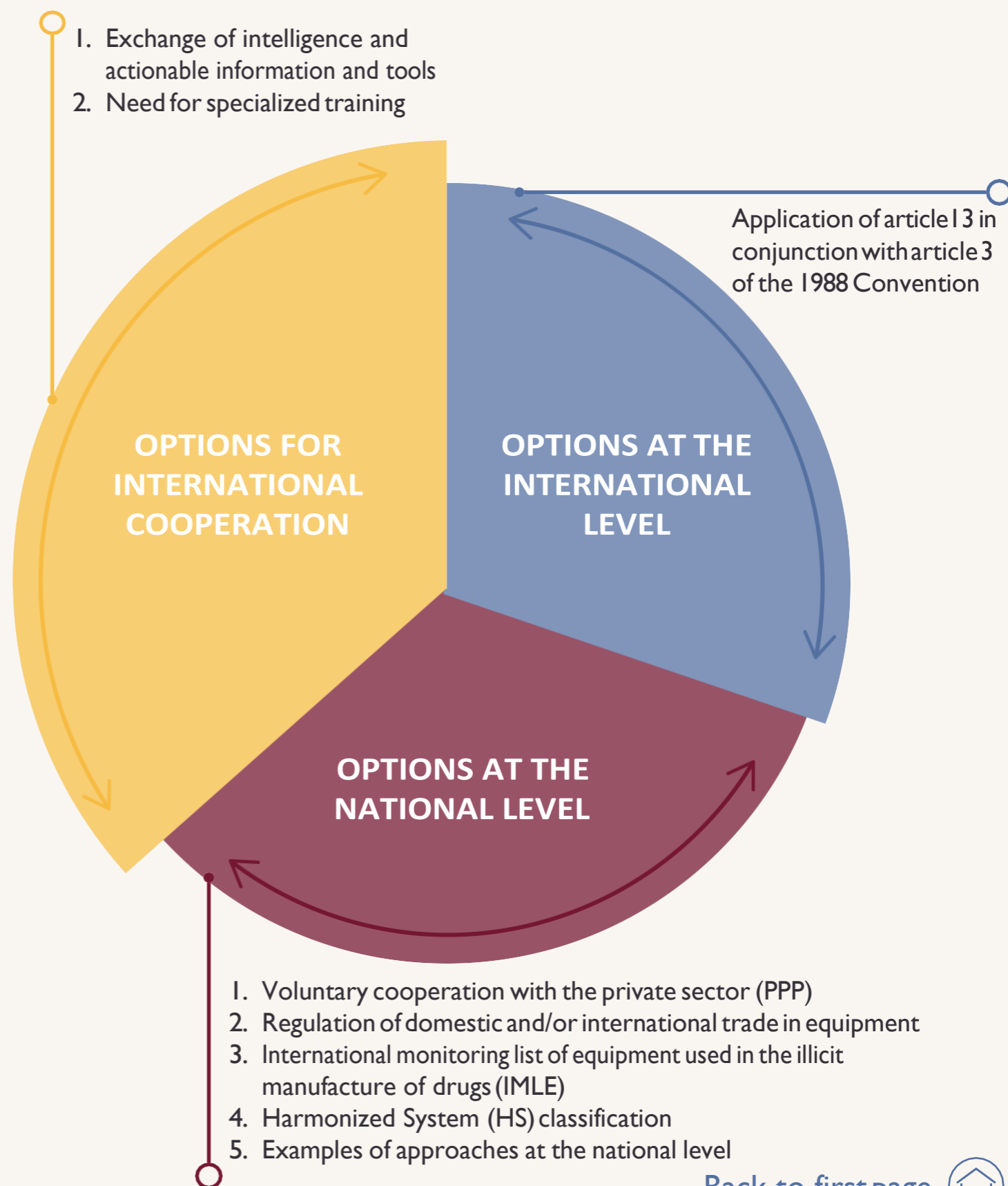
The document provides various options, measures, approaches and tools to guide international policy efforts and action aimed at preventing the diversion of equipment essential for illicit drug manufacture, enhancing the operational use of article 13 of the 1988 Convention, and cooperating to that end. It is an important resource for Governments seeking to implement tried and feasible practices that would fit into their national circumstances and within the framework of their domestic legislation.

### How and where to access it?

Available on this [link](#).

All official UN language versions available on this [link](#).

## CONTENTS OF THE GUIDANCE DOCUMENT





## The International Monitoring List of Equipment used in the illicit manufacture of drugs (IMLE)

### What is it?

List of illicit drug manufacturing equipment of concern

### Who is it for?

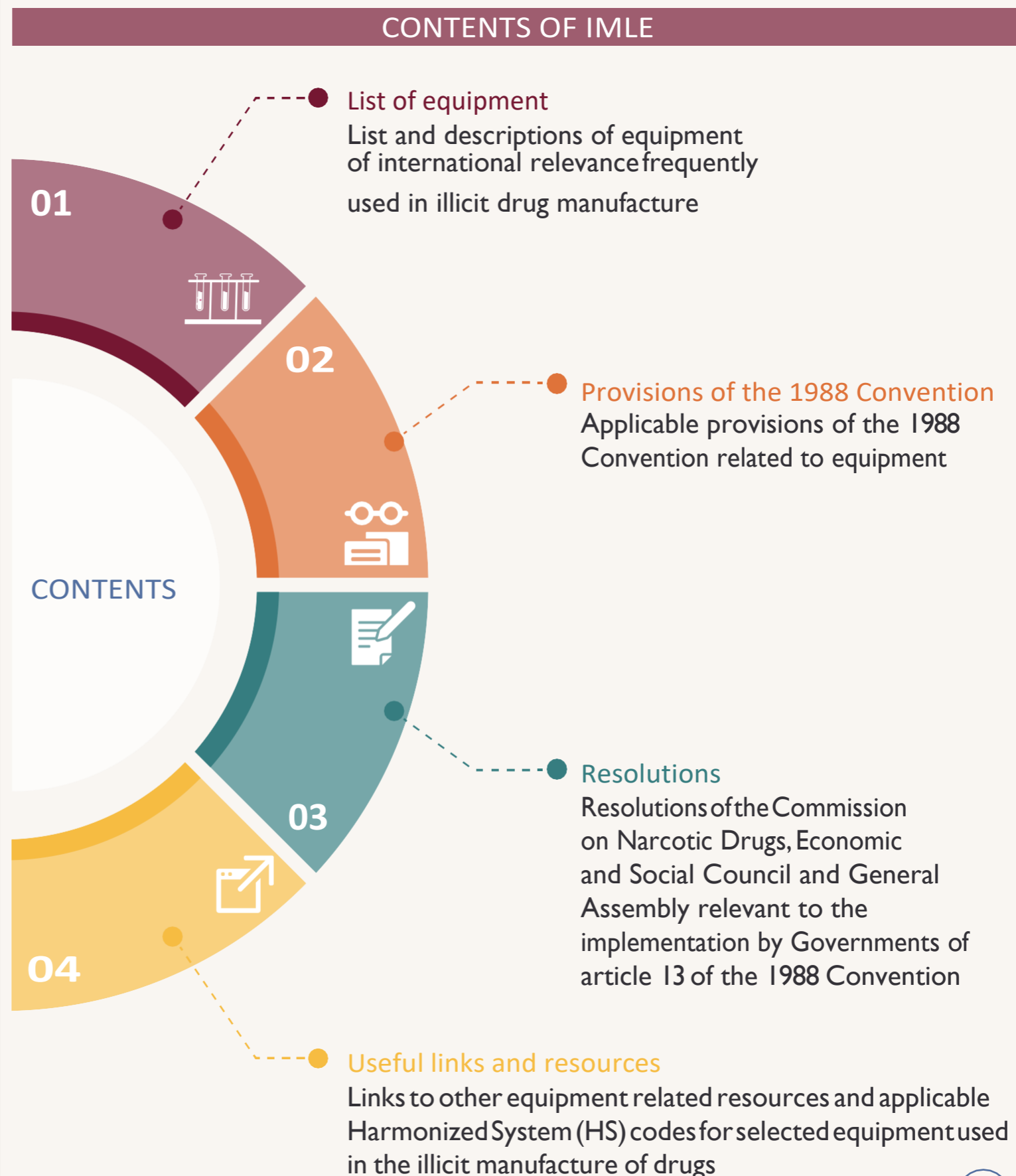
Regulatory authorities, law enforcement and other national authorities concerned with equipment-related matters, industry concerned

### When and why use it?

The international monitoring list of equipment (IMLE) includes certain items of equipment of international relevance and for which substantial evidence exists of their use in the illicit manufacture of narcotic drugs, psychotropic substances, new psychoactive substances and precursors. Released in 2022, IMLE is a living document and will be regularly updated based on trends related to equipment used in illicit drug manufacture.

### How and where to access it?

Available on the [INCB secure portal](#) or on request for use by national authorities.





## Repository of national approaches

### What is it?

Examples of national approaches on the implementation of article 13 of the 1988 Convention

### Who is it for?

Regulatory authorities, law enforcement and other national authorities concerned with equipment-related matters, general public

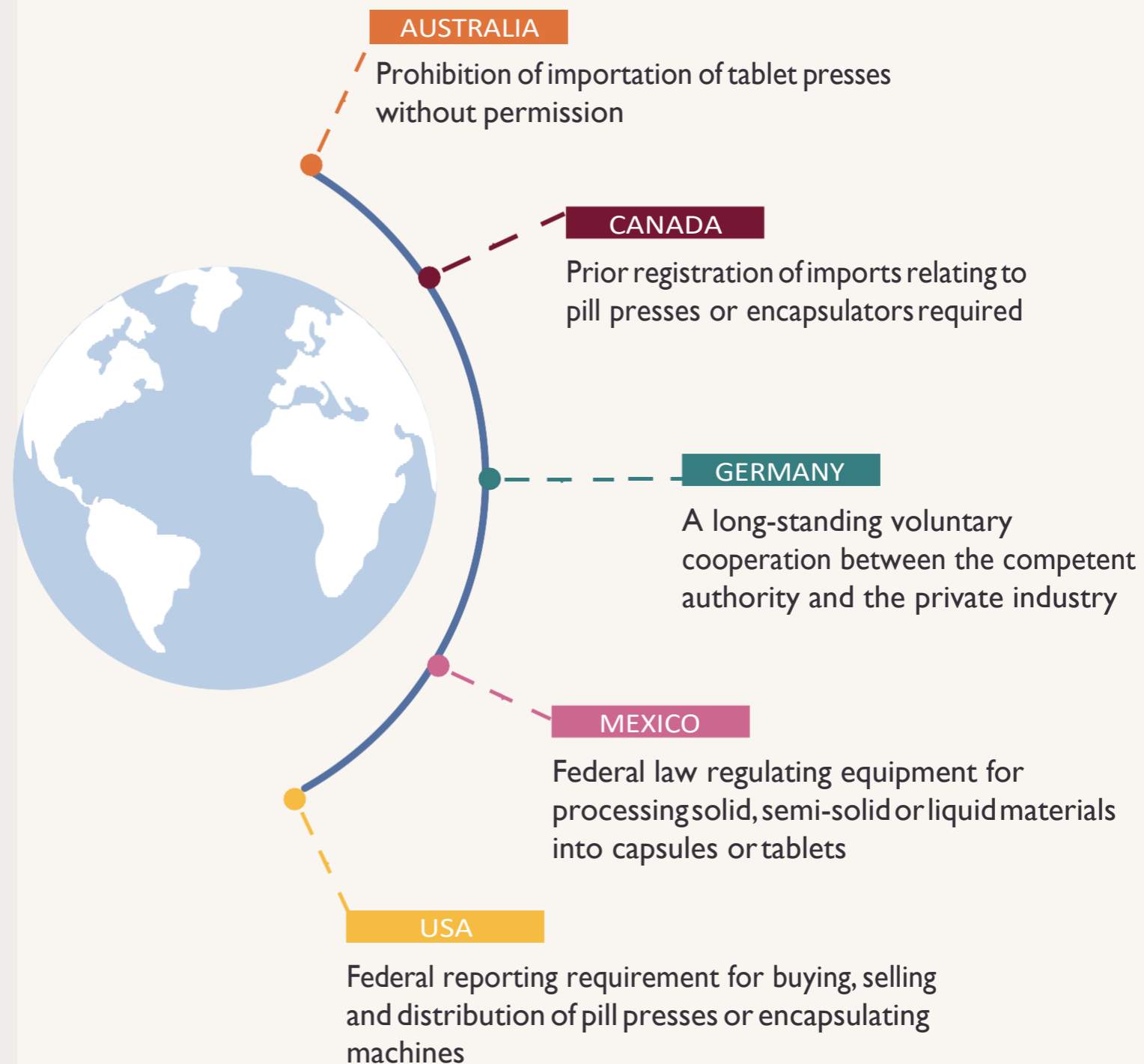
### When and why use it?

As in the case of monitoring of chemicals and considering their wide legitimate uses, Governments face similar challenges when it comes to finding a balanced approach to prevent the diversion of equipment into illicit channels while ensuring its availability for legitimate purposes. Circumstances and needs regarding controls vary from country to country. The repository contains existing national approaches in relation to the implementation of article 13 of the 1988 Convention and provides sources for additional information. The list is not exhaustive and is being updated as additional information is made available to INCB.

### How/where to access it?

Available on the INCB website by clicking on this [link](#).

## EXAMPLES OF NATIONAL APPROACHES





## Precursors Incident Communication System (PICS)

### What is it?

Online tool for intelligence sharing (software)

### Who is it for?

Regulatory and law enforcement authorities, involved in effecting seizures or investigating diversion of chemicals and equipment essential for drug manufacture

### When and why use it?

PICS is the INCB's secure online tool to enhance real-time communication and information sharing between national authorities on precursor and equipment incidents and suspicious transactions. PICS users have access to real-time data to assist with investigations of incidents and will be able to quickly identify emerging chemicals and diversion patterns.

### How and where to access it?

Accessible on a secure website [pics.incb.org](https://pics.incb.org) for registered users. Government agencies that would like to be granted access to PICS should send an email to [incb.pics@un.org](mailto:incb.pics@un.org).

## OVERVIEW OF PICS

